

Community Corner

Slow Down and Move Over

Day in and day out, our roadway workers are putting their lives on the line in order to maintain and upgrade the roads you drive

**JUST LIKE FOR POLICE,
PLEASE SLOW DOWN AND
MOVE OVER - IT'S THE LAW.**



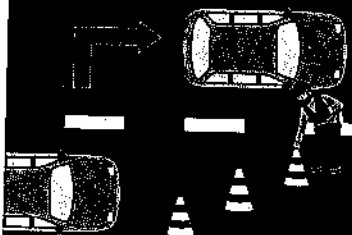
As soon as you see lights, vests or reflectors, check traffic around you, **SLOW DOWN** and **MOVE OVER** if safe to do so.

Highway workers are not there to inconvenience you, they are trying to do their job!



Your local highway crew is an integral part of your community. They are responsible for keeping roads clear, repairing damage, managing traffic, and ensuring that essential transportation routes remain accessible for everyone, from daily commuters to emergency responders.

They are someone's son, daughter, mother, father, brother, or sister! Don't be the reason they don't get home.



**SLOW DOWN
AND MOVE OVER!**



Department of Transportation
Local Technical Assistance Program



Community Corner

What does my Highway Department do?

1 Keep you safe

During the winter, crews are out keeping the roads free of snow. In the spring they work to keep the ditches clean to avoid flooding. During summer & fall you can find them paving, mowing, & trimming brush to keep signs and roads up to par.

2 Road Maintenance

Your highway department typically takes care of potholes, ditches, culverts, and bridges. They also clean, sweep, mow, plow, pave, and much more.

3 Liaisons

They work with other government officials to keep your roads safe and determine regulations related to transportation, such as weight limits for trucks, and traffic rules.

4 In an Emergency

Rain or shine, day or night, Highway & DPW crews are ready when an emergency arises. From flooding, to hurricanes, winter storms, and even a traffic accident, they are there to keep roads open and allow EMS, Police, and the Fire Department to get to those in need.

Overall, the goal of a highway department is to create and maintain a safe, efficient, and reliable transportation network to support economic development and improve the quality of life for residents.



Department of Transportation
Local Technical Assistance Program

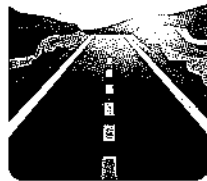


SAFE IF YOU STRAY

There are measures your municipality may put into place to help safeguard you from potentially life-threatening injuries if you leave your lane.

SHOULDER WIDENING

Adding a paved shoulder provides a driver the opportunity to regain control of their vehicle.



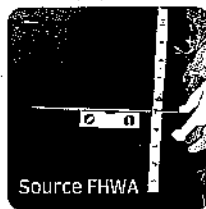
REMOVING FIXED OBJECTS

A fixed object includes anything that could cause a severe crash including: trees, poles, or fences. Removing fixed objects and creating a consistent *clear zone* allows a driver who left the roadway the ability to recover without crashing.



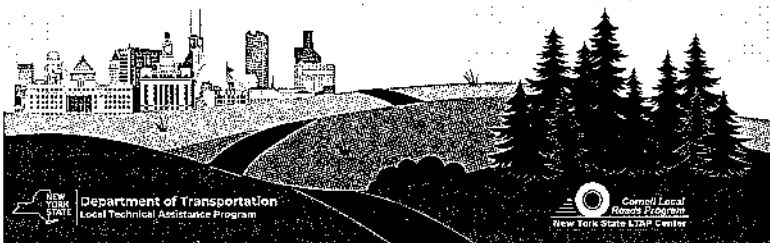
SAFETY EDGE

A *Safety Edge* is a paving technique that creates a low angled drop-off on the edge of the pavement. This makes it easier for the driver to regain control of their vehicle if they stray off the edge of the road. It improves the durability of the pavement as well!



SLOPE FLATTENING

Flattening steep slopes increases the driver's ability to keep their vehicle stable, regain control, & avoid obstacles.



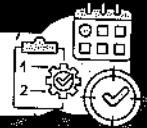
Local Roads Safety Plans



Why should we have a local roads safety plan (LRSP)s?

New York State's highway community is committed to ensuring a safe, efficient, & environmentally sound transportation system for all who live, work, and travel in the state.

What is a local roads safety plan?



A local road safety plan uses data from crashes, maintenance logs, safety audits, & traffic violations to form a comprehensive approach to improving safety. The goal is simple: ensure everyone can return home safely, even if they make a mistake.

LRSPs focus on reducing lane departures, protecting vulnerable users like pedestrians & bicyclists, & improving safety at intersections.



Who is involved in a local roads safety plan?

You the community, law enforcement, elected officials, schools, highway departments & public health experts all can have a say in the safety of our roads. Working together as a team ensures all concerns are highlighted.

Outcomes



LRSPs provide prioritized plans to reduce severe crashes. Education on new and updated safety measures, such as chevrons, roundabouts, and crosswalks, combined with vehicle and traffic enforcement and the ongoing challenge of maintenance, plays a vital role in keeping our roadways safe for everyone.

For more information visit FHWA Local Road Safety Plans website



<https://highways.dot.gov/safety/local-rural/local-road-safety-plans>

Community Corner

SHARE THE ROAD, SAVE A LIFE

Tips for Motorists

Cars kill and injure people

- **LOOK** out for pedestrians and bicycles everywhere, at all times, especially on rural roads, where typically there are no sidewalks.
- **SLOW DOWN** around people on the street, in school zones, and in neighborhoods where children are present.
- **SPEED KILLS.** Driving slower than the speed limit is the right thing for safety. Even slowing down by 10 mph can reduce the chances of injury or death by a factor of four or more.

Tips for Pedestrians

Walk Where it is Safe

- Use sidewalks if they are provided.
- If a sidewalk is not available, walk **AGAINST** traffic. This allows you to make eye contact with drivers.

Crossing

- Always use a crosswalk if provided.
 - If a crosswalk isn't available, use a location with as few obstructions as possible.
- Remember, cars have the right-of-way if there is no crosswalk!

Tips for Bicyclists

Bicyclists should always maintain a safe distance between traffic and curbs, while holding a predictable line.

- Always ride on the **RIGHT SIDE** of the road. Riding on the left is dangerous and against NYS law.
- Bicyclists **MUST** follow the same traffic laws as drivers of motor vehicles.



Department of Transportation
Local Technical Assistance Program



